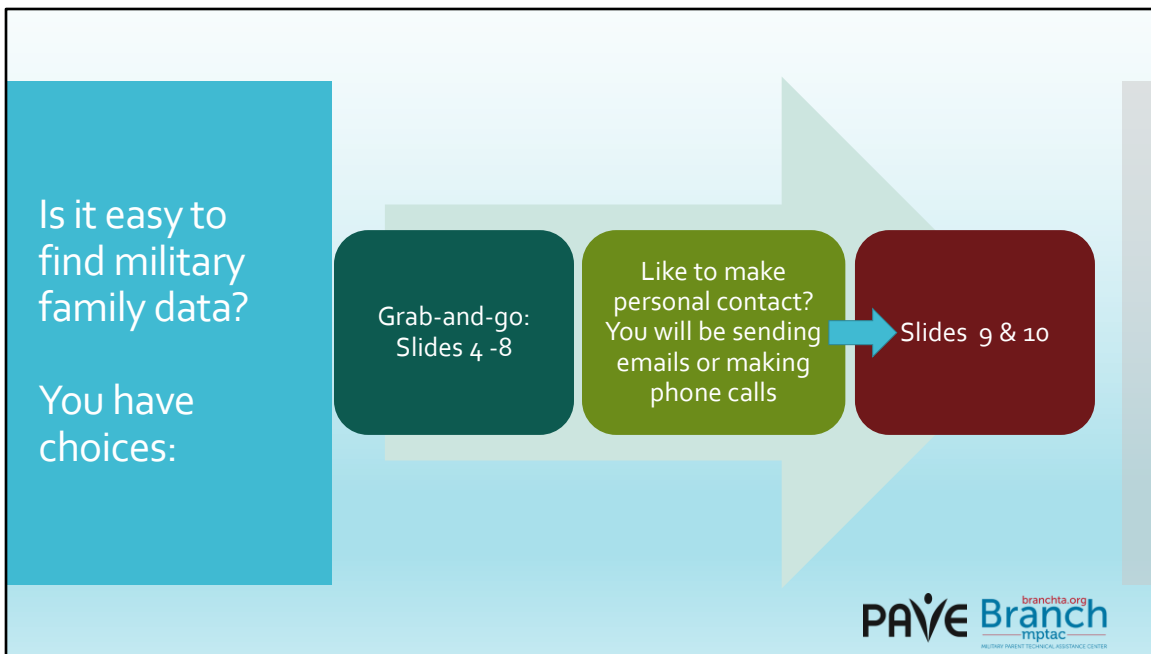


How to Find Military Family Data for Your State

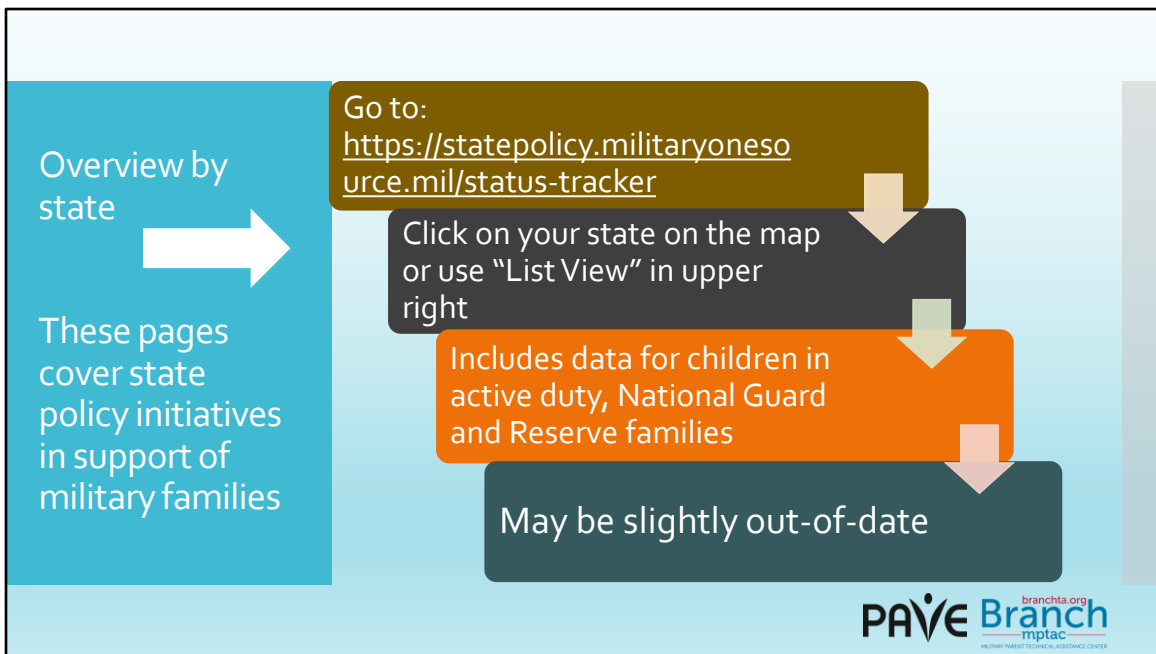
How to Find Military Family Data for Your State



Where can military family data help you? Think about all the ways you currently use data in your work. Parent Centers have used military family data in the following ways: Grant Progress reports, grant applications, outreach strategies, and reports to Boards, donors, and families. You can also use data on military families to plan and inform your strategies for organizational growth, programming, and even use for your volunteer program (military family members make great volunteers!)

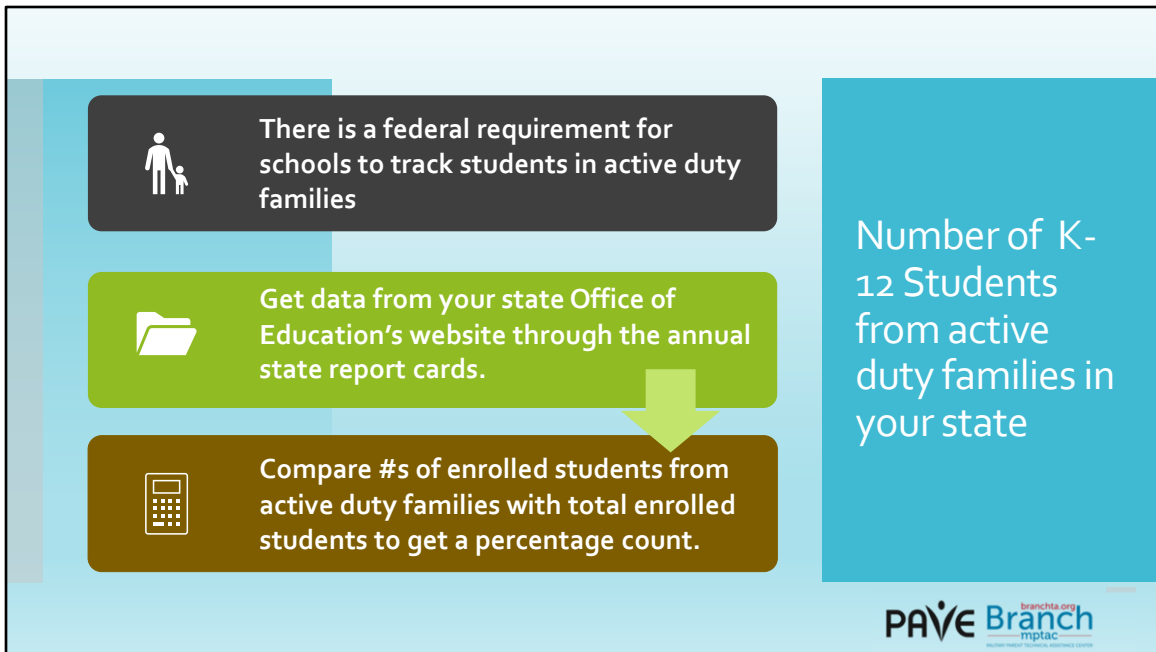


Is it easy to find military family data? Depending on which type of data you want, it can be as quick as navigating to a website page, or as in-depth as making personal contact to find specific data sets on military-connected children, youth and young adults with disabilities. Slides 4 through 8 cover fairly quick methods; the in-depth research is described on slides 9 and 10.



Military family data overview by state: this website

is a policy tracker for military family issues—but also offers state-level demographics for service members and families. On the website, click on your state in the map, or used the text-based “List View” found in the upper right of the page. This is the quickest way to find data for numbers of children in both active duty and National Guard and Reserve families, with the data broken out. Note that data may be slightly out-of-date (but still useable).



Number of K-12 students from active duty families in your state. ESSA requires schools to track students in active duty families. You can find this data in your state's annual Report Card, usually on your state's Department or Office of Education website. Each state may name student demographics differently.

For instance, [Washington State](#) breaks out student enrollment by program (English Language Learners, Special Education, Section 504) and by characteristics (low-income or non-low income, homeless or non-homeless, *military parent or non-military parent*). Once you identify where the information is located, you can compare numbers of enrolled students who have an active duty military parent with the total number of

enrolled students for a school year. Some reports may give you a percentage count.

Considerations

Helpful tips to
keep in mind...

Not all military families will have
self-identified to their child's
school

These reports do not include
students in non-active duty
families (Reserve, National Guard,
Veteran).

For state data on numbers of students from active duty military families, it's helpful to keep in mind that not all military families may self-identify to their child's school, and that this data doesn't include students from Reserve, National Guard, or Veteran families,

Number of Veteran Families by State

Veteran Households with Children (by state and county) .

Scroll down page to "General Interest" to view and download the spreadsheet

PAVE Branch branchta.org
mptac www.pave.org/branch-mptac

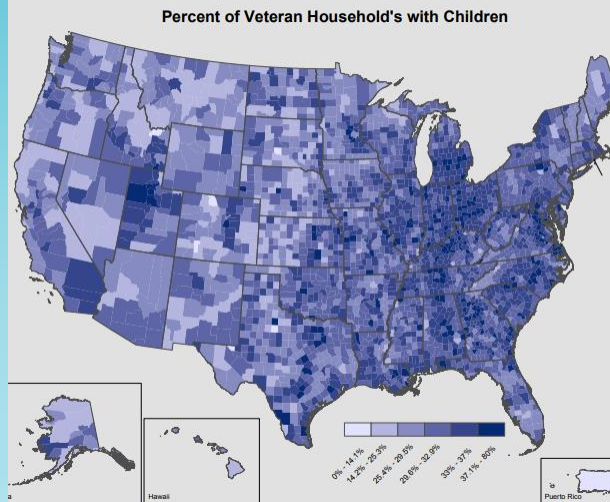
For children in Veteran families, this spreadsheet from the National Center for Veterans Analysis and statistics is especially helpful for outreach purposes as it shows data by county. On the page, scroll down to the category "General Interest", expand the category, and select and open the spreadsheet.

Additional ideas:

[This map image shows concentrations of veterans with children by county.](#)

Expanding and then cropping the map image to your state offers an at-a-glance “infographic”.

[List of state veteran’s affairs websites](#) -may have useful data on number of veterans in your state who are new to civilian status



This map image can be used with the spreadsheet above for visual support for those demographics. To find data on veteran families in your state who are new to civilian status contact **your [state’s Veterans Affairs Office](#)** may have useful data. You may wish to contact a staff person directly to ask for the information. Contacting this office may prove useful for more than data - state Veterans’ Affairs Offices have resources for recent veterans and retirees and can help families connect to your parent center.

Numbers of active duty family members with disability by state



Try requesting this information from an EFMP Family Support staff member at the installations in your state.

- [Find all your state's installations here](#) (includes Coast Guard's SNP Program contacts)
- [Learn about EFMP here](#)



If you are interested in actual numbers of active-duty family members in your state, you can try requesting that information from Exception Family Member program staff at your state's installations. If you have many installations in your state you may want to allow a longer timeframe to collect this data, if available. **You can find installations and EFMP office phone numbers on your state's [Map](#) on the Branch website. Coast Guard SNP Program contacts are included. [Learn about EFMP here.](#)**

Be aware data will include families where the Exceptional Family Member (EFM) is an adult, unless EFMP staff can break the data out for you.

Because some installations include, or are nearby specialized medical care, military services may be sending more family members with disabilities to your state

Good to Know

PAVE Branch
branchita.org
mptac
Military Personnel Training and Career Development Center

For EFMP family data, it's good to be aware that raw numbers may include EFMP adults, unless the staff member can break out the data by age group. You might be surprised at the numbers of EFMP families in your state. They may be there because of specialized medical care available at a military or civilian hospital.

Military family data can do great things for military families and your Parent Center!
Happy data-gathering!

Contact us: Email thebranch@wapave.org
Additional resources at: <https://branchta.org/>



We hope this tutorial will help you find and effectively use military family data to benefit your Parent Center and the military families in your state or area. Happy data-gathering!